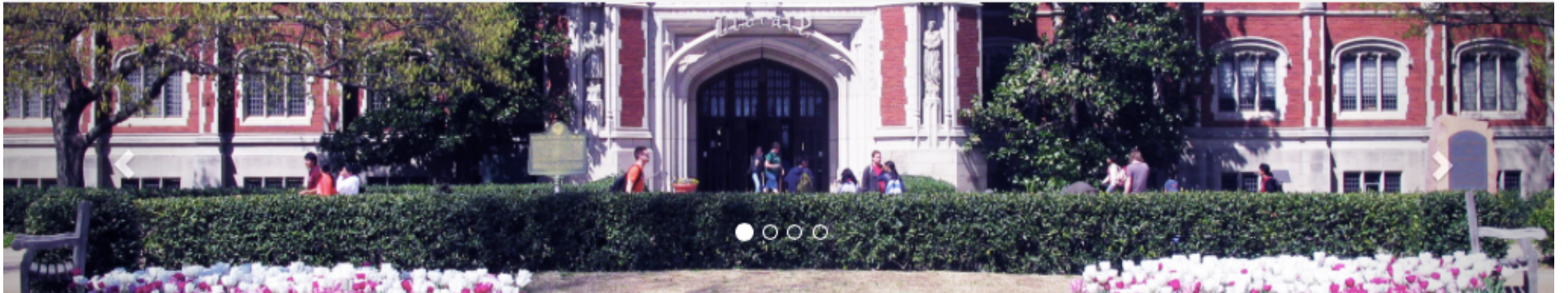




State of the OU Libraries



Architecture Library Engineering Library Fine Arts Library Youngblood Energy Library
Western History Collections

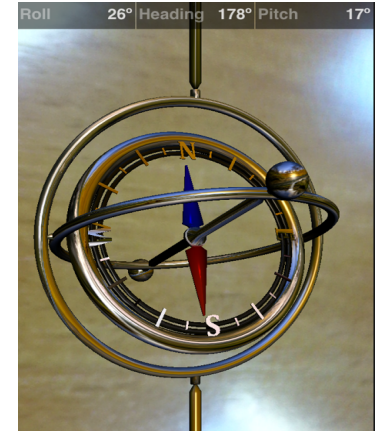
Rick Luce

Dean of University Libraries & Assoc. VP for Research

May 21, 2015

Talk Roadmap

- Strategic Direction – *where we are headed*
 - Progress over past year on Strategic Plan
- Looking ahead: capital projects
- Looking ahead: programs & services



External Context: Oklahoma leaders reach deal on \$7.1 billion state budget

--May 19, 2015

- State currently facing a \$611 M shortfall
- For FY 2016 ... *“Colleges and universities will be cut by about 3.5 percent”*
 - Second straight year of shortfall
 - Use ‘rainy day’ funds
- Library and all Colleges: already received holdback reductions



Transforming the Research Library

Goals:

1. Build community at the intellectual crossroads of the university
2. Inspire creativity and problem solving
3. Proactively engage with students and faculty in support of university's educational mission

University Goals

Library Strategic Plan

Library experience: virtual & physical

Special Collections

Research & data stewardship

Scholarly Communications

Workforce

Collections

Staff

Services

Facilities

Technology

Financial Resources

External forces

21st C. Library

University Goals

Library Strategic Plan

Library experience

Special Collections

Research & data stewardship

Scholarly Communications

Workforce

Collections

Staff

Services

Facilities

Technology

Financial Resources

External forces

21st C. Library

Virtual Experience

- Alma migration
 - Huge enterprise effort & win:
 - ❖ Branches OKC & Tulsa, Law; Cataloging, Acquisitions, Access Services ...

OU Libraries - Noteworthy Accomplishments

ALMA Implementation

“The Oklahoma team were clearly focused on their goals. They strongly supported one another, shared expertise and suggestions and worked together to find common-sense solutions to accommodate the needs of individual campuses. We saw their willingness to get it right at all costs. It also helped that they maintained good will, a sense of humor, and a cooperative spirit throughout the project.”

Matti Shem-Tov, CEO, Ex Libris Group



Virtual Experience

- Alma migration
 - Huge enterprise effort & win:
 - ❖ Branches OKC & Tulsa, Law; Cataloging, Acquisitions, Access Services ...
- GW digitization and web support
- Web sphere – development of new web site



UNIVERSITY LIBRARIES
The UNIVERSITY of OKLAHOMA

New Beta Library Website

DISCOVER!

OUNetid *

Password *

Log In

Sample Input from Student Advisory Council:

“I REALLY enjoy having a map of all library locations!...The format is very intuitive....Overall, the site looks much better.”



MAIN LIBRARY



BRANCH LIBRARIES



SPECIAL COLLECTIONS



UNIVERSITY LIBRARIES
The UNIVERSITY of OKLAHOMA

New Beta Library Website

Input from Library Advisory Council:

“It’s clear and easily navigable, and much less cluttered than the current website.”

“It looks great on mobile devices.”

“The lists of the technologies available in different library spaces, including each of the branch libraries is really useful.”

Departments - Noteworthy Accomplishments

Scholarly Comm / Acquisitions / Serials

- Formed SHAREOK Advisory Council
- Renegotiated select journal package pricing
- Moved to ordering YBP shelf-ready materials
- Two new Open Access Journal proposals accepted:
 - *Journal of Higher Education Athletics*
 - *Study and Scrutiny*

Report from Knowledge Services

Experience & Engagement

- CLC opens – 4 new staff members
- Scholarly Services & Research Initiatives
 - One new liaison librarian Kristal Boulden
 - Position description framework for Liaison Librarians
- Undergrad Services & Learning Initiatives
 - Hired new department head: Mary Ellen Spencer; librarian Tamara Means
- Access and Delivery Services & Library Service Center
 - Hired new department head Elizabeth Burden; promoted two staff members Doni Fox and Sarah Huber



Generational Learning Contrasts

Building: 1958 and '82

- Highest use = books
- Individual study
- Quiet reading
- Structured environment
- Technology = microform readers, early online catalog

Gen Y '81–2000, Gen Z

- Highest use = people
- Learn in groups
- Social media, multi-task
- Short attention span
- Group work, multi-media
- Visual
- Digital natives



Helmerich Collaborative Learning Center – Design Goals

1. Challenge common assumptions about what it means to be a library in the 21st century
2. Push boundaries to reinvigorate the library as a catalyst for imagination and creativity, both physically and virtually
3. Combine enabling spaces, information assets, human expertise, and appropriate technologies to enable student success
4. Platform to experiment, discover, and learn together



HCLC

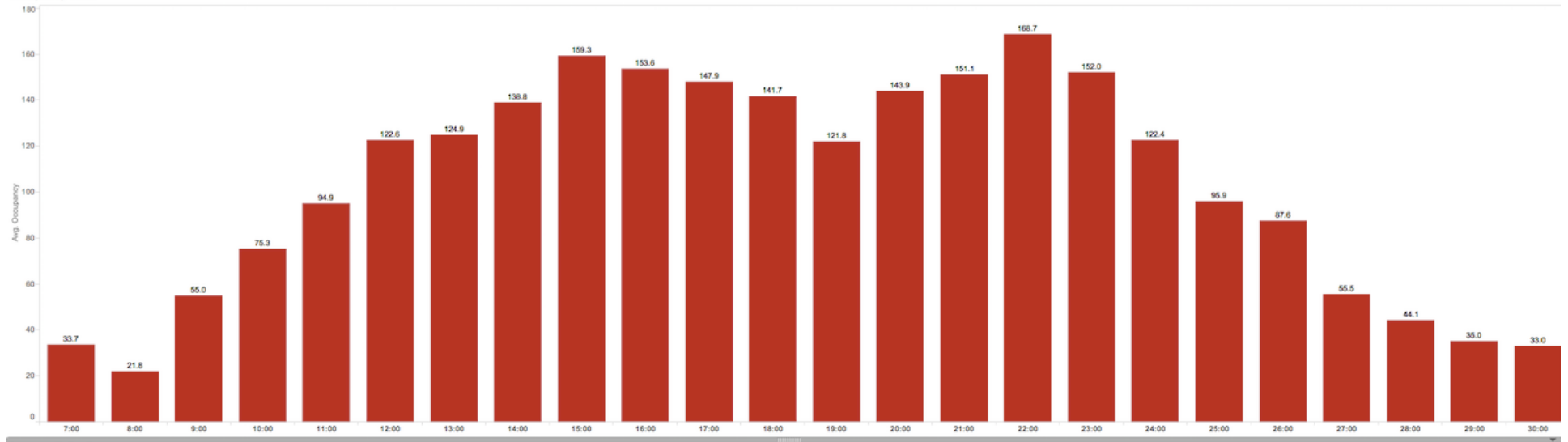


- 5% of total Bizzell space
- >20K booking hours in 8 study rooms
- ~500 classroom events



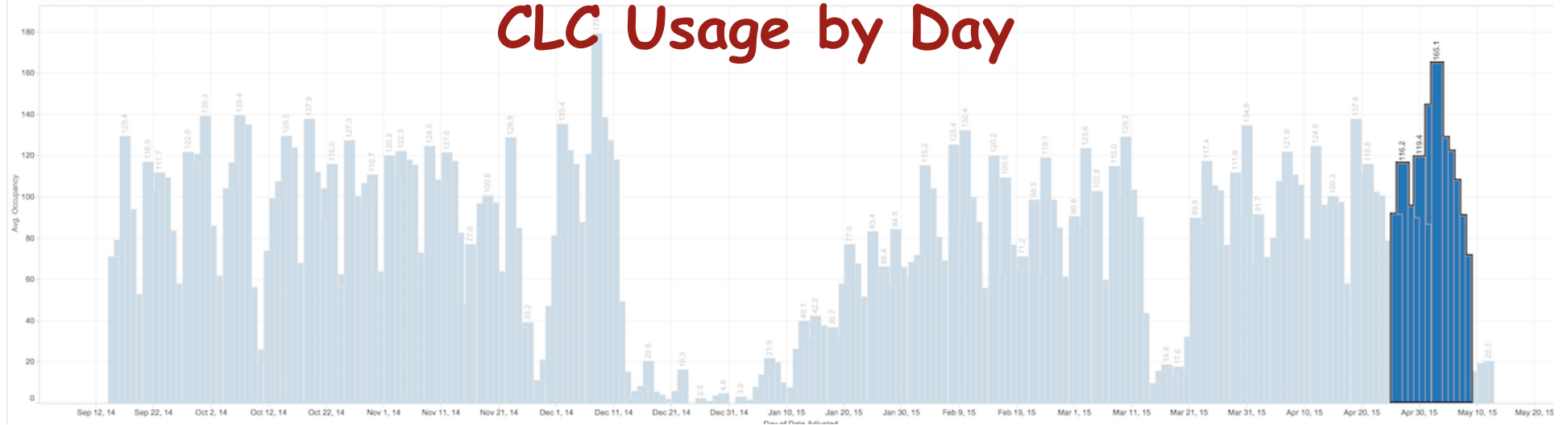
CLC Usage by Hour

Occupancy Stats



Average Daily Occupancy

CLC Usage by Day



Video



Not Just a Facility Renovation

- **Required new workforce capabilities**
 - Emerging Technology Librarians
 - Digital Scholarship, data management
 - Geospatial Information Services
- Accelerated our **organizational redesign**
- '*Learning lab*' to continuously try new ideas and approaches
- **Proof of concept** - changed campus perception of the library

Bizzell, 5th floor Renovation



Birdseye View of 5th floor



More Gallery Space for Exhibits

Open Lobby & Small Theater



BEFORE



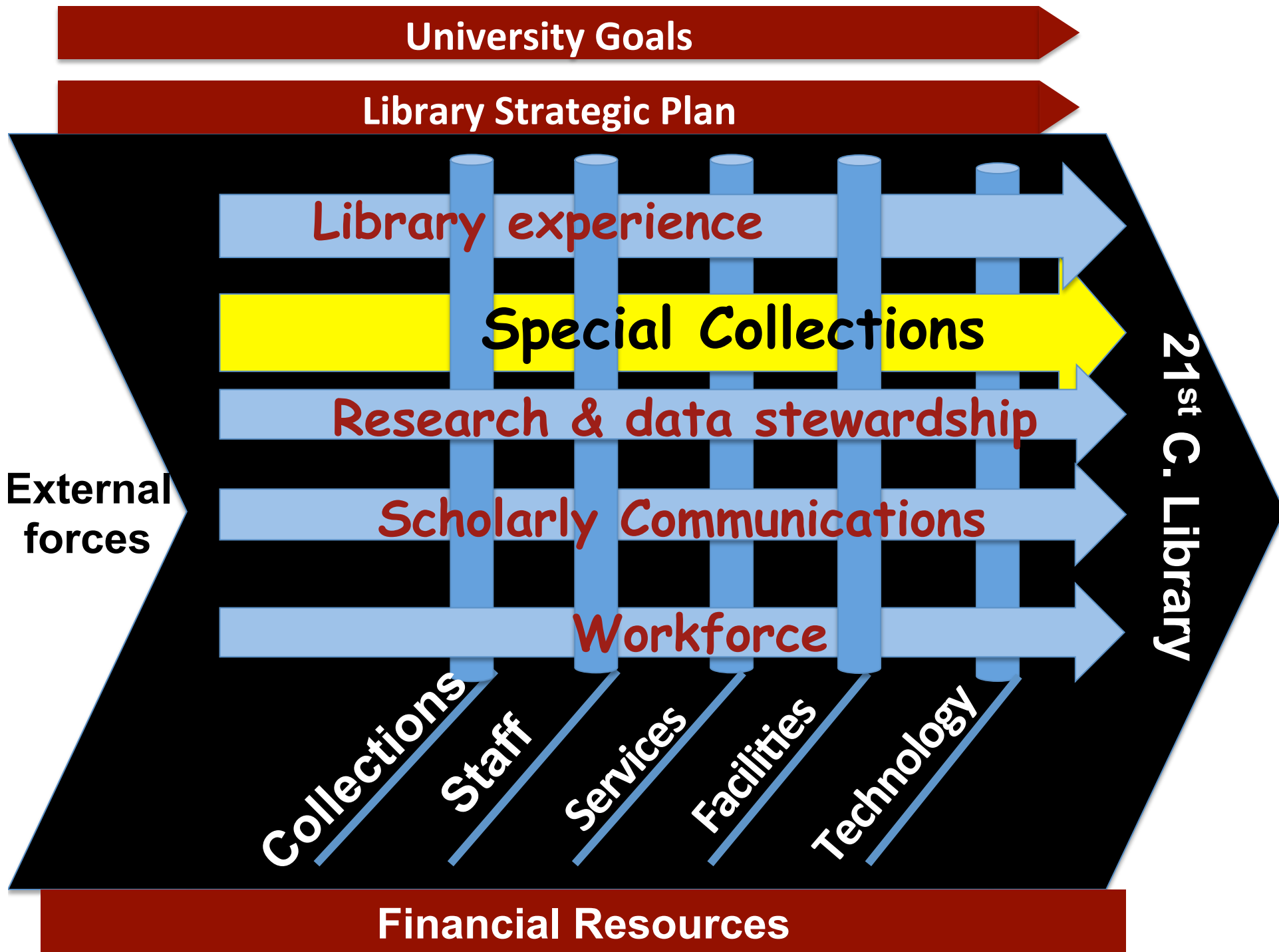
AS IMAGINED



NOW

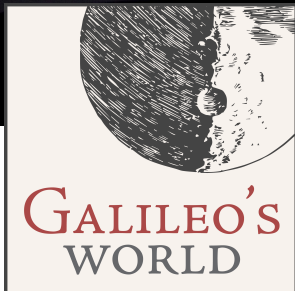
CONSTRUCTION SUMMARY

- Completed construction, opened Helmerich CLC
- Planned and began L5 construction - Special Collections renovation
- Completed stairwell upgrade
- Completed elevator renovation
- Continued work on Master Plan
- Began Library Service Center Planning
- Completed many smaller facilities projects



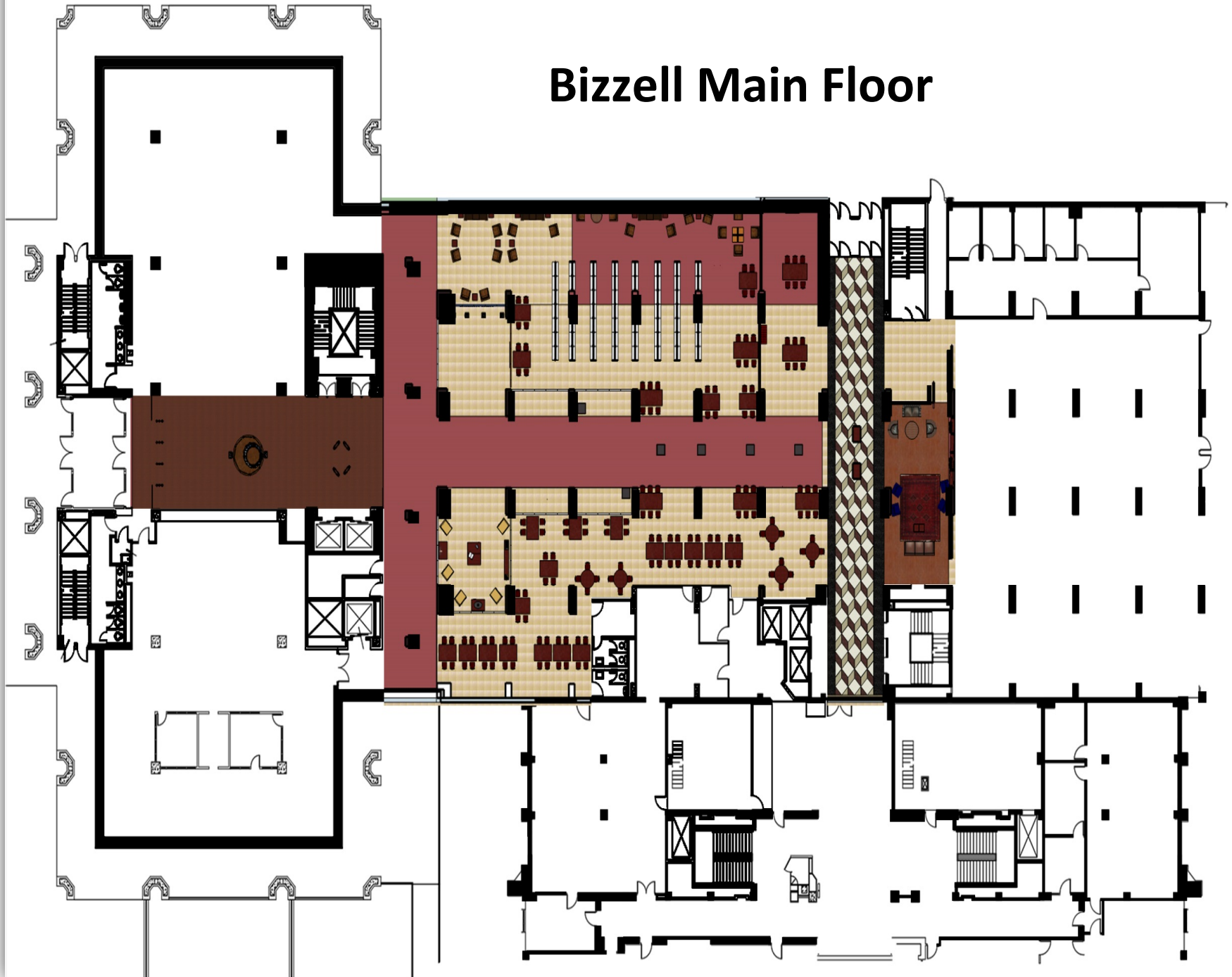
Special Collections

- Prof. Jonathan Stalling – Curator for Asian Literary Translation Collection (Goldblatt & Kubin)
 - New home for Asian collection
 - Cataloged Goldblatt collection



Galileo's World: Bringing Worlds Together

Bizzell Main Floor





Main Entrance Level 1

Tower of Pisa

Model at 1/10th Scale in Bizzell Library Foyer





Entry into the Neustadt Wing

A Walk Through Galleries in Main



Exhibit Locations



OU-Norman

- Bizzell Memorial Library
- Fred Jones Jr. Museum of Art
- Sam Noble Oklahoma Museum of Natural History
- National Weather Center
- Headington Hall

Health Sciences Campus

- Robert M. Bird Library

OU-Tulsa Campus

- Schusterman Library

OU in Arezzo

- Arezzo public library

Challenges Ahead

- Facilities
- Off site collection storage
- Journal 'Big Deal' package cancellations

University Goals

Library Strategic Plan

Library experience

Special Collections

Research & data stewardship

Scholarly Communications

Workforce

Collections

Staff

Services

Facilities

Technology

Financial Resources

External forces

21st C. Library

Research & Data Stewardship

- Partnering with VPR and IT to build an Informatics Core
 - Secured funding to bring Jonah Duckles on board
 - Recommended for proposal funding in Advanced Bioinformatics (\$315K)
- **iHub** progressing
- Partnership with **Exaptive** testing semantic
- Progress toward ORCID identifiers for OU
- SHAREOK repository now a content provider for SHARE Notify (Beta)

Fun with Visualization

- Humans are visual creatures
- Seeing is part of understanding
- Seeing data and relationships is part of our future
- ✓ Emerging Tech Librarians: VR with Oculus Rift 3D

University Goals

Library Strategic Plan

Library experience: virtual & physical

Special Collections

Research & data stewardship

Scholarly Communications

Workforce

Collections

Staff

Services

Facilities

Technology

Financial Resources

External forces

21st C. Library

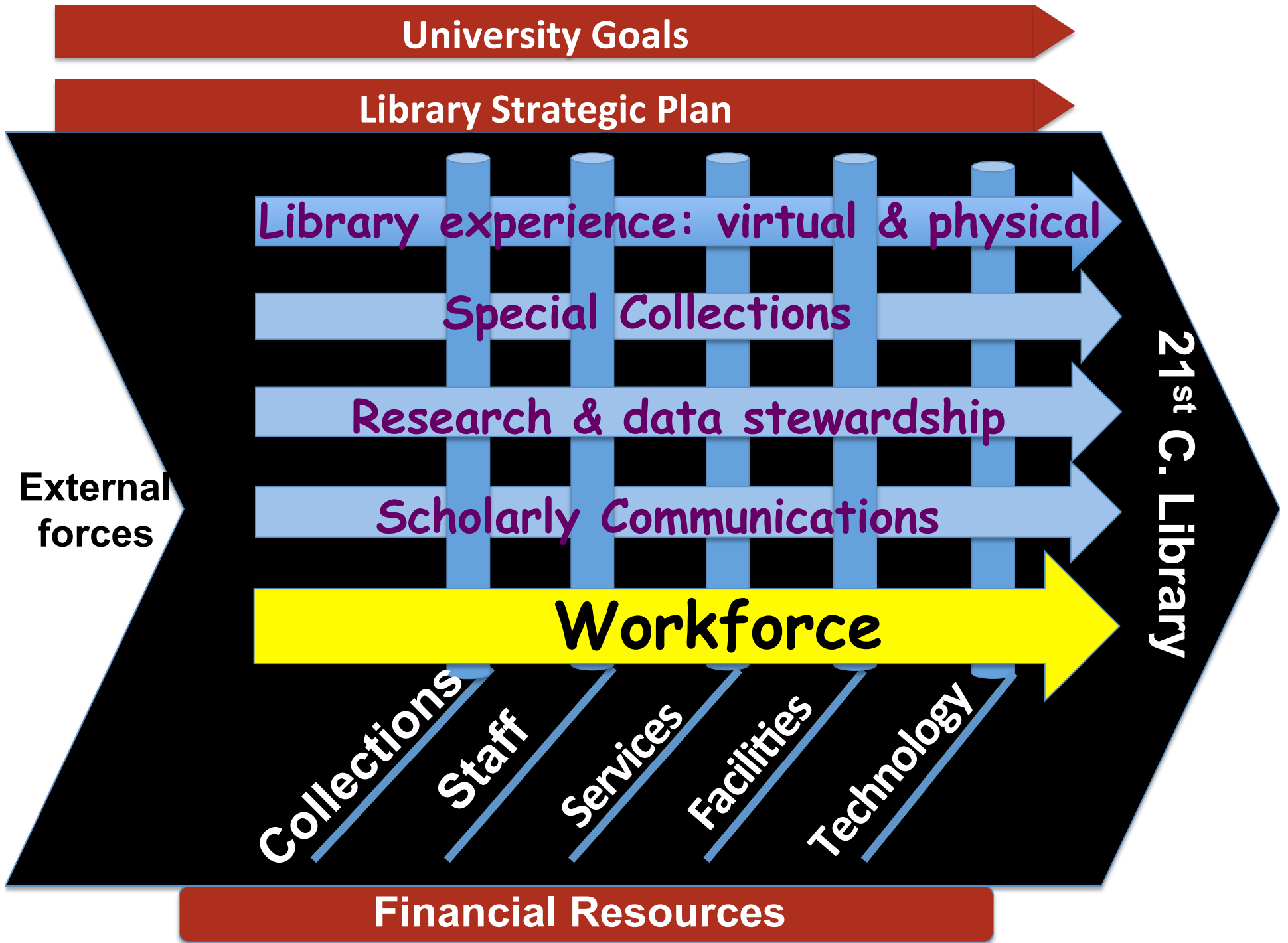
Noteworthy Accomplishments

Scholarly Communications / Acquisitions / Serials

- Formed SHAREOK Advisory Council
- Renegotiated select journal package pricing
- Moved to ordering YBP shelf-ready materials
- Two new Open Access Journal proposals accepted:
 - *Journal of Higher Education Athletics*
 - *Study and Scrutiny*

Our Journal Spending is an Issue

- Constant no-growth collections budget over 5-6 yrs.
- Journal inflation exceeds 30+ % during same period
 - Total 'Big Deal' licensing packages Norman campus = **\$3.9M** in FY 2014
 - Using an average inflationary rate for serials of 5.6%, inflation alone will consume **\$281,723** in 2015
- Compromises ability to acquire monographs
- Relative to peers and best in class, our budget ratio is over-weighted on collections



University Goals

Library Strategic Plan

Library experience: virtual & physical

Special Collections

Research & data stewardship

Scholarly Communications

Workforce

Financial Resources

External forces

21st C. Library

Collections

Staff

Services

Facilities

Technology

New Capabilities Sample - 33 Month Horizon

- **Undergrad support:** 2 undergrad librarians; History survey class research support; hybrid digital support Dream class
- **Research & data initiatives:** Digital Scholarship Specialist; GIS Librarian; research data specialist; informatics specialist
- **Faculty teaching support:** OER coordinator
- **On site:** 2 CLC emerging tech librarians; CLC coordinator; facility & security managers
- **Special collections:** Digi-lab coordinator; registrar; Jonathan Stalling – Curator for Asian Literary Translation Collection
- **Digital infrastructure:** SHAREOK; *Discover!* + Alma; new web site in Beta; partnerships: Max Planck; Exaptive; SHARE
- **Joined HathiTrust:** 13M+ digitized titles

NEW LIBRARY POSITIONS: 2014 TO PRESENT

(19 NEW POSITIONS CREATED / FILLED SINCE JAN. 2014)

JAMES ADAMS, EMERGING TECHNOLOGIES LIBRARIAN

KRISTAL BOULDEN, SOCIAL SCIENCES & HUMANITIES LIBRARIAN

ELIZABETH BURDEN, HEAD, ACCESS & DELIVERY SERVICES

TWILA CAMP, WEB SERVICES MANAGER

TARA CARLISLE, DIGITAL SCHOLARSHIP SPECIALIST

MATT COOK, EMERGING TECHNOLOGIES LIBRARIAN

DAVID DAVIS, EXHIBITION COORDINATOR

JONAH DUCKLES, DIRECTOR, INFORMATICS & INNOVATION

CHELSEA JULIAN, GALILEO'S WORLD PROJECT COORDINATOR

FRANCESCO LUZZINI, EOS POSTDOC

TAMARA MEANS, UGS LIBRARIAN

FRED REISS, HEAD DIGITAL DATA/METADATA & E-CONTENT LICENSING

MELISSA RICKMAN, SPECIAL COLLECTION REGISTRAR

SEAN RICHARDS, CONSERVATIONIST

JONATHAN STALLING, CURATOR, CHINESE LITERATURE TRANSLATION ARCHIVES

MARY ELLEN SPENCER, HEAD, UGS

ERIZ ZEMKE, HCLC COORDINATOR

ZHONGDA ZHANG, REPOSITORY DEVELOPER

TAO ZHAO, REPOSITORY DEVELOPER

**NEW LIBRARY HIRES 2014 TO PRESENT
(12 EXISTING POSITIONS FILLED SINCE JANUARY 2014)**

DAREN ANDERSON, CATALOGING & METADATA

QUINN DAVIS, LIBRARY TECHNOLOGY PLATFORMS

DANICA EASLEY, ACQUISITIONS

RICHARD FITZPATRICK, FACILITIES

SHANNON HACKNEY, GEOLOGY LIBRARY

TIMOTHY LAWS-RODRIGUEZ, ILL

JENNA MC DONALD, SPECIAL COLLECTIONS

JENNIFER MOSER, ACCESS & DELIVERY SERVICES

CARI ROBERTS, LIBRARY TECHNOLOGY PLATFORMS

JASON SHERMAN, LIBRARY TECHNOLOGY PLATFORMS

RICK SHULTZ, DIGILAB

AMANDA SMELTZER, ACQUISITIONS

Exhibiting Leadership

- Partnership agreement with Museo Galileo
- OER: goal of 15 textbook adoptions in place by summer
 - Now listed as member of Minn. Open textbook library network
- One of 5 international development partners for 'Reading List' solution with ExLibris
 - Imperial College & Kingston University (UK), KU Leuven (Belgium), UNSW Australia, OU
- State leadership in Oklahoma
 - Alma adoption: OU Enterprise (UL, Law, HSC, Tulsa) + OKC and OSU
- HCLC receives *Great Inspirations Award* from Creativity Oklahoma

Noteworthy National Recognition

Access Services – staff development

- **Christy Kulp** selected as participant in ALA's Leading to the Future



- **Matt Cook** named a Library Journal:



- **Rick Luce** elected to ARL Board of Directors; appointed Co-Chair SHARE Steering Committee for ARL/AAU/APLU

On the Horizon

- **Open newly renovated 5th floor**
- **Galileo's World exhibition and programs**
- **Library Service Center**
- **Master Plan completion**
- **Building cognitive networks - Exaptive**
- **iBeacon deployment**
- **Innovation Hub**
- **Oculus Rift**

And more!

Goals for Today



Appreciation for today goes to:

- Doni Fox - site logistics
- Training Steering Committee – Chair Matt Stock, James Bierman, Jackie Slater, Jeff Widener, Tara Carlisle

Engagement - collaboration - diversity of thought

Thank You!

Questions?



The UNIVERSITY of OKLAHOMA
LIBRARIES
libraries.ou.edu